

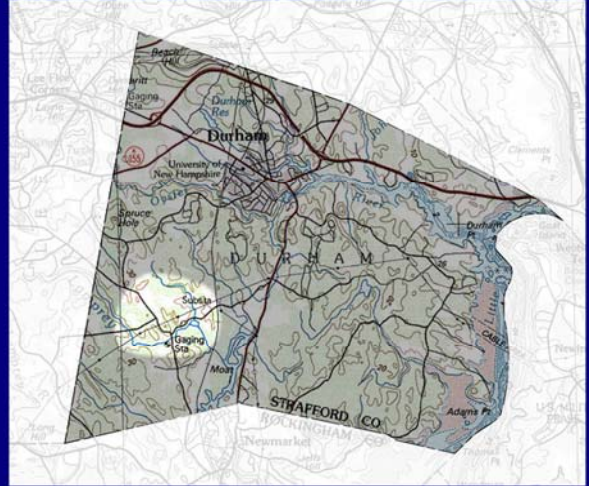
Durham's Highland House

Past, present and future



by Richard H. Lord - DHA president

10/24/2006
slide_01.jpg



10/24/2006
slide_02.jpg

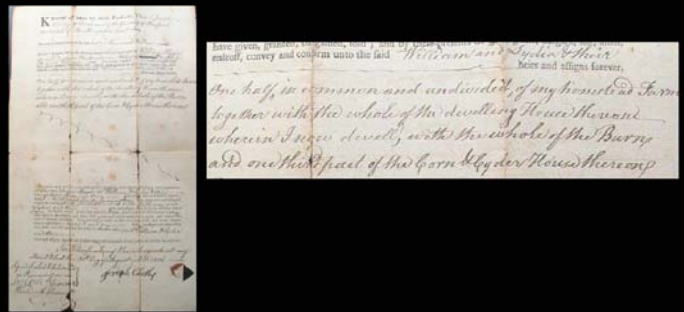


Wiggins - Woodman
graveyard at
Highland House

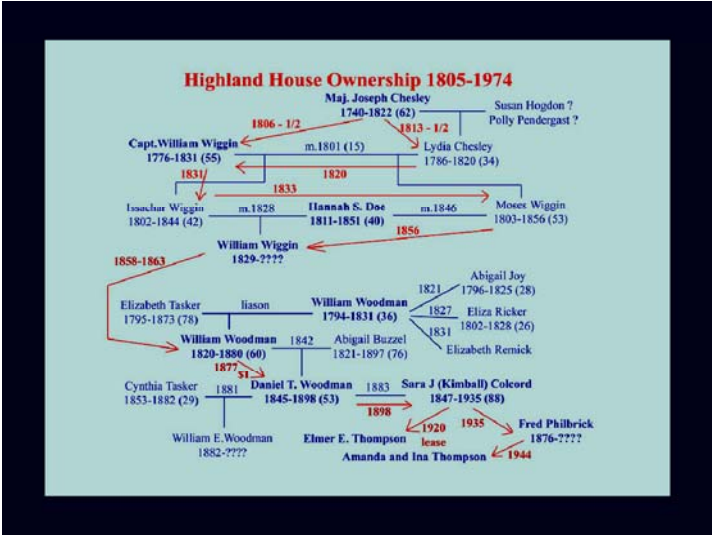


10/24/2006
slide_03.jpg

Chesley ----- > Wiggins 1806



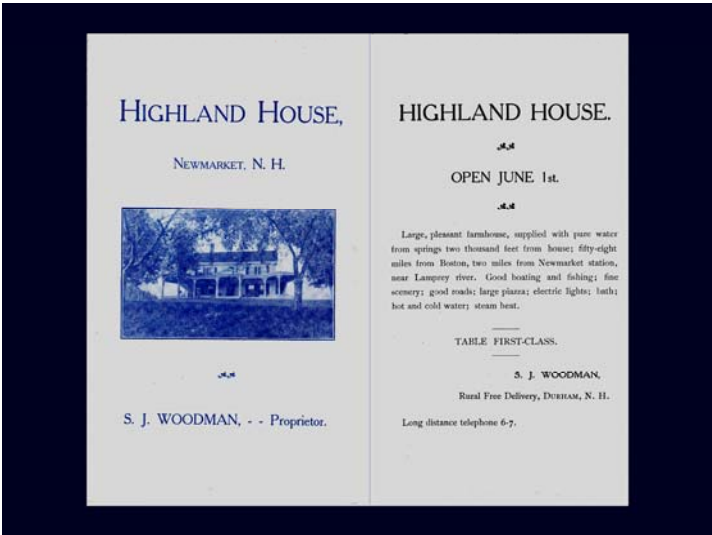
10/23/2006
slide_04.jpg



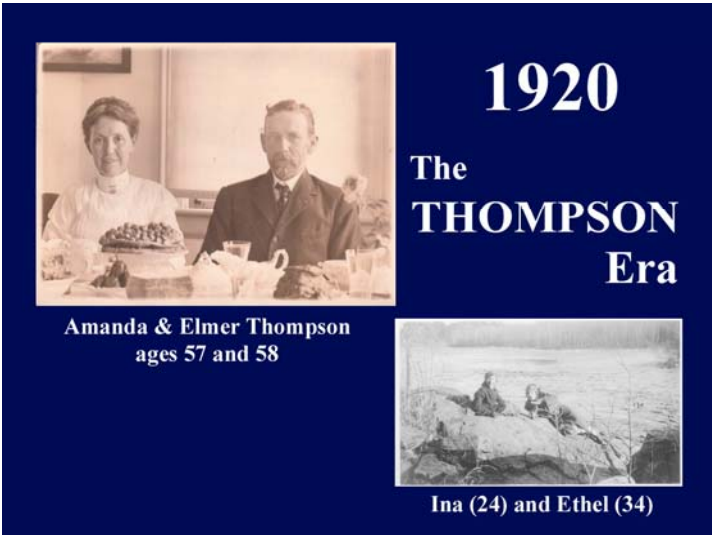
10/24/2006
slide_05.jpg



10/24/2006
slide_06.jpg



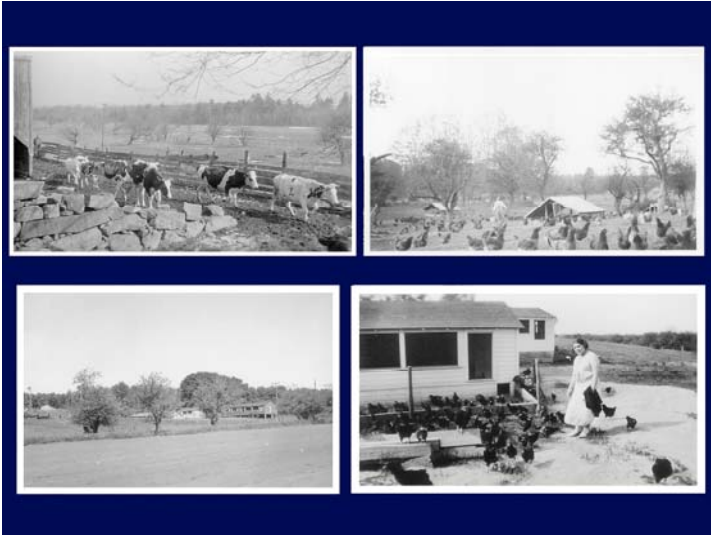
10/24/2006
slide_07.jpg



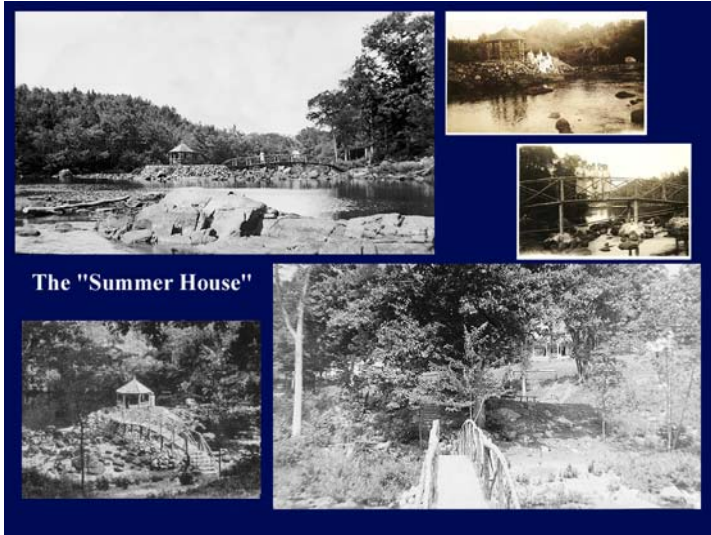
10/24/2006
slide_08.jpg



10/23/2006
slide_09.jpg



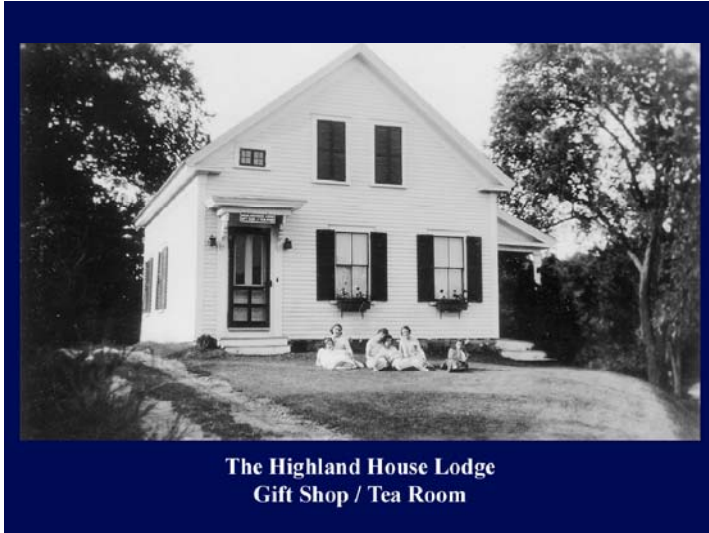
10/24/2006
slide_10.jpg



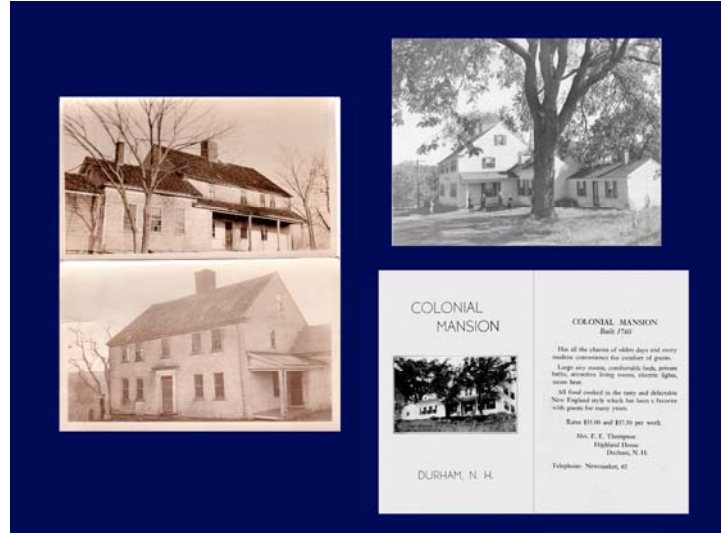
10/24/2006
slide_11.jpg



10/24/2006
slide_12.jpg



10/23/2006
slide_13.jpg



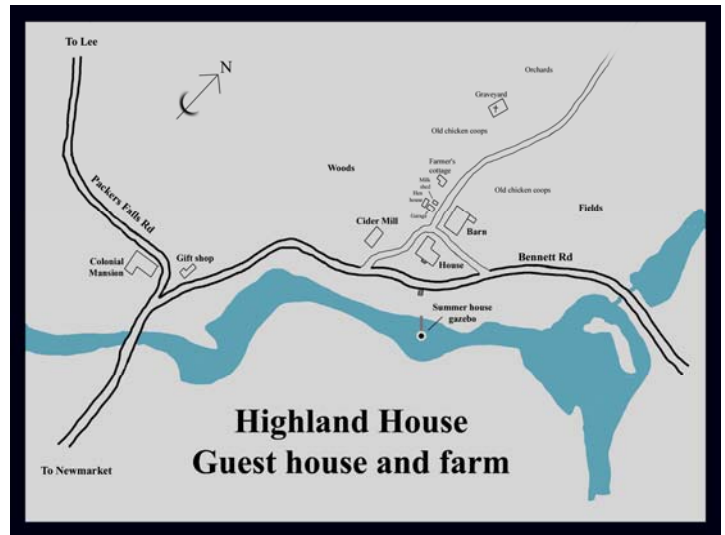
10/24/2006
slide_14.jpg

Events in the early Thompson era (1920 - 1944)

1920 - 1938
Main house and farm revitalized
Cider mill converted to dorm / recreation hall
Stone hauled to river, summerhouse built
The "Lodge" acquired and converted to gift shop
The "Colonial Mansion" acquired and fixed up

1932 - Ethel marries Harrie Rand and leaves HH
1933 - Elmer Thompson dies, age 71
1935 - Sarah J. Woodman dies, age 88
Estate goes to Fred Philbrick
1938 - Colonial Mansion opens

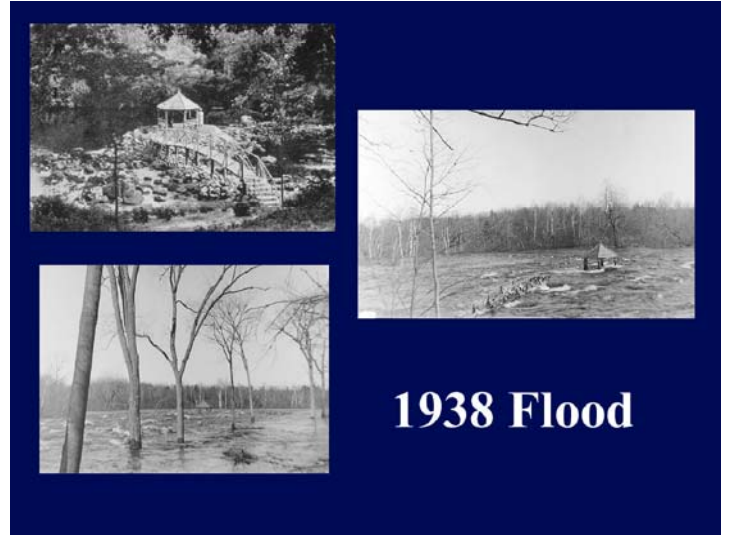
10/24/2006
slide_15.jpg



10/24/2006
slide_16.jpg



10/24/2006
slide_17.jpg



10/23/2006
slide_18.jpg



10/23/2006
slide_19.jpg



10/23/2006
slide_20.jpg

If in the country you long to be
just take this little tip from me.
Pack your grip without delay
for the Highland House is the place to stay.

Mrs. Thompson is some cook.
She does it all without a book.
Everything is mighty fine
the Highland House is the place to dine.

Our suite of rooms can't be beat,
the best place on this little street.
Better than a palace with gilded dome
is this love nest called "The Highland Home."

We had our boat and motor car.
We saw the sights both near and far.
We had our fun since we came here
that kept us always in good cheer.

The time has come to say goodbye.
It's pretty hard, I don't deny.
We'll give the house a rousing cheer,
hoping all will meet next year.



Louise, Mary and Rose Leane - Waltham, MA
Ernestine Barr - Waltham, MA
1920

10/24/2006
slide_21.jpg

Six girls from the city went,
a week at Highland House they spent.
Mrs. Thompson was the hostess there.
You couldn't beat her anywhere.

A more beautiful spot you never could find,
and many a time we will call to mind
the music of the river flowing swiftly by,
that soothed every care like a lullaby.

While the girls stayed there these seven days,
Miss Ethel also won their praise.
She was always willing to entertain
wit talk of her travels from "Frisco" to Maine.

Miss Ina, gentle, sweet and fair,
a place in our hearts will always share.
She tended our wants, was faithful and true.
When we're hungry, Miss Ina, we'll remember you.

The meals too couldn't be beat,
they understood we liked nice things to eat,
but of all the things on the bill of fare,
the apple pie we favored there.

Today from the Highland House we must roam,
back again to our city home.
We say good-bye, wish all good cheer
and hope we'll return again next year.



Margaret Connors -
Katherine, Mary and Margaret Welch -
Florence and Lillian O'Neil - 1920

10/24/2006
slide_22.jpg



Just a few of the organizations that have
patronized Highland House over the years

- ASME
- The Boston Youth Outing Club
- The Brookline Society of Young People
- The Durham Book & Scroll Club
- Various church youth groups
- The NH 4-H
- Fraternity and sorority house parties
- High school and College athletic teams
- The Newmarket Men's Service Club
- UNH Faculty Club
- UNH Photography Conference
- UNH YMCA/ YWCA weekend retreats
- The Vagabond Club - Boston
- Various Teacher's Conferences



VISITORS REGISTER			
DATE	NAME	ADDRESS	REMARKS
10/24/06	W. W. WILSON	UNIV. SQUARE	U.S. ARMY
	Ann L. Smith	Brookline	1122
	Ann L. Smith	Brookline	1122
	W. W. WILSON	UNIV. SQUARE	U.S. ARMY

10/24/2006
slide_23.jpg



10/24/2006
slide_24.jpg

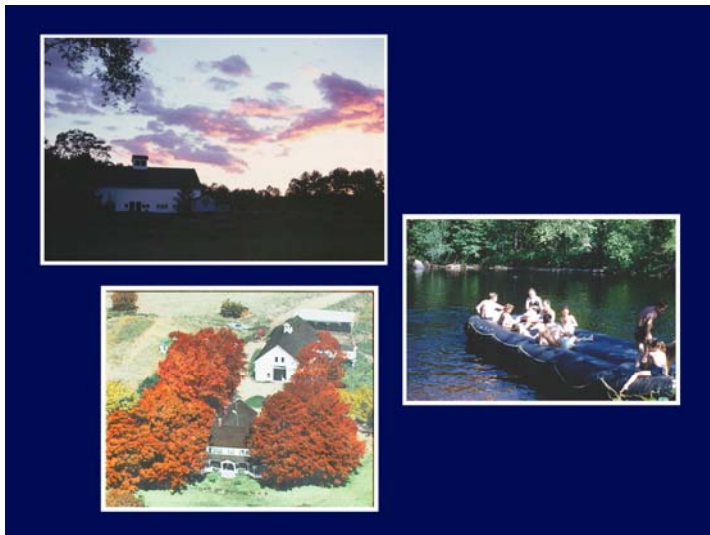


10/24/2006
slide_25.jpg

The 1950-1970 era

1950 - Amanda dies at age 87
 1957 - Ethel dies at age 71
 1958 - Ina sells Colonial Mansion
 1970 - Ina sells Lodge

10/23/2006
slide_26.jpg



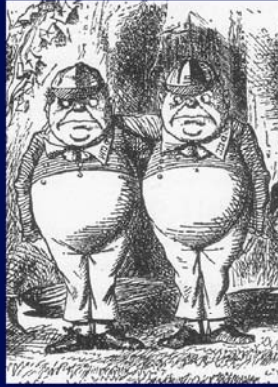
10/24/2006
slide_27.jpg



10/24/2006
slide_28.jpg

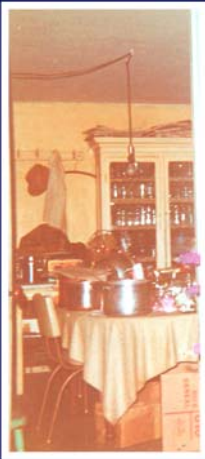


10/24/2006
slide_29.jpg



Faye & Fern

10/23/2006
slide_30.jpg



10/24/2006
slide_31.jpg

Ina Thompson 1974

Ina Thompson is a lady who has been in the community for many years. She is a member of the Highland House and has been instrumental in the development of the house. She is a very kind and generous person and has been a great help to many people in the community.

Ina Thompson and the Highland House
Ina Thompson gives gift of Highland House to University

Ina Thompson, a lady who has been in the community for many years, has given a gift of the Highland House to the University. The house is a beautiful building and will be used for many years to come. Ina is a very kind and generous person and has been a great help to many people in the community.

The house is a beautiful building and will be used for many years to come. Ina is a very kind and generous person and has been a great help to many people in the community.

10/24/2006
slide_32.jpg

Highland House serves TSAS student's needs

By Roger Rydell

The Highland House Project is a new building on the campus of Texas State University, and is being built by students for students. The new structure is 40 by 100 feet and is going to be occupied by 100 students.

The 100 students are living at the Highland House project in a building that will be used for many years to come. The project is a great example of what can be done when you work together.

The project is a great example of what can be done when you work together. The project is a great example of what can be done when you work together.

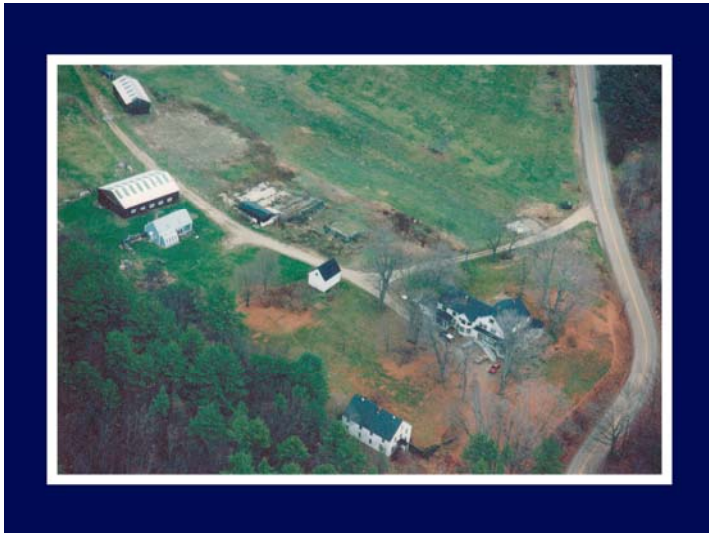


10/24/2006
slide_33.jpg

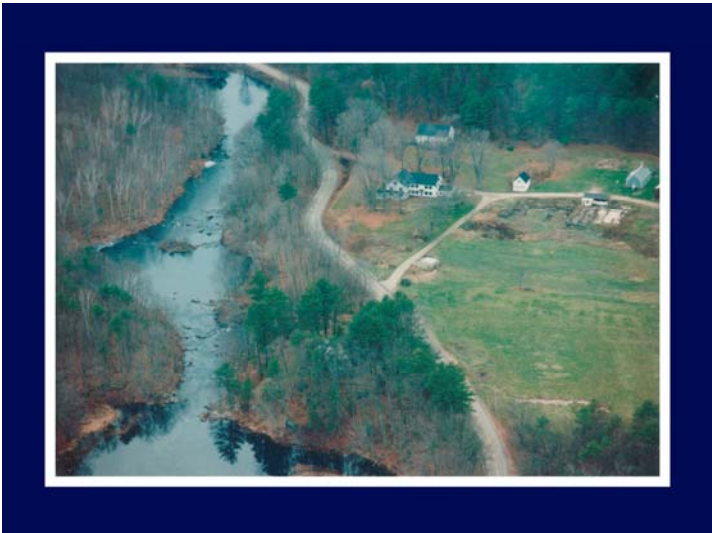
1975 - 1993

- 1974 - Ina gives HH to UNH with life tenancy at house
- 1974 - TSAS residency program
- 1974 - Student roomers
- 1975 - Barn burns
- 1980 - A few guests but no cooking
- ~1982 - TSAS program fading
- 1987 - Ina (91) has visiting nurses
- 1990 - Ina unable to live at HH
- 1990 - Ina's possessions auctioned
- 1991 - UNH rents HH to staff
- 1993 - Ina dies

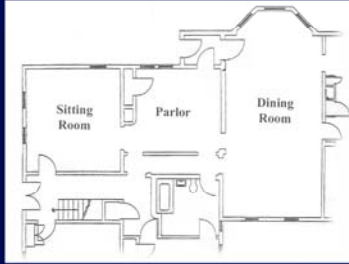
10/24/2006
slide_34.jpg



10/24/2006
slide_35.jpg



10/24/2006
slide_36.jpg



10/24/2006
slide_37.jpg



2006
Restoration:
Steve & Lori Lamb



10/24/2006
slide_38.jpg