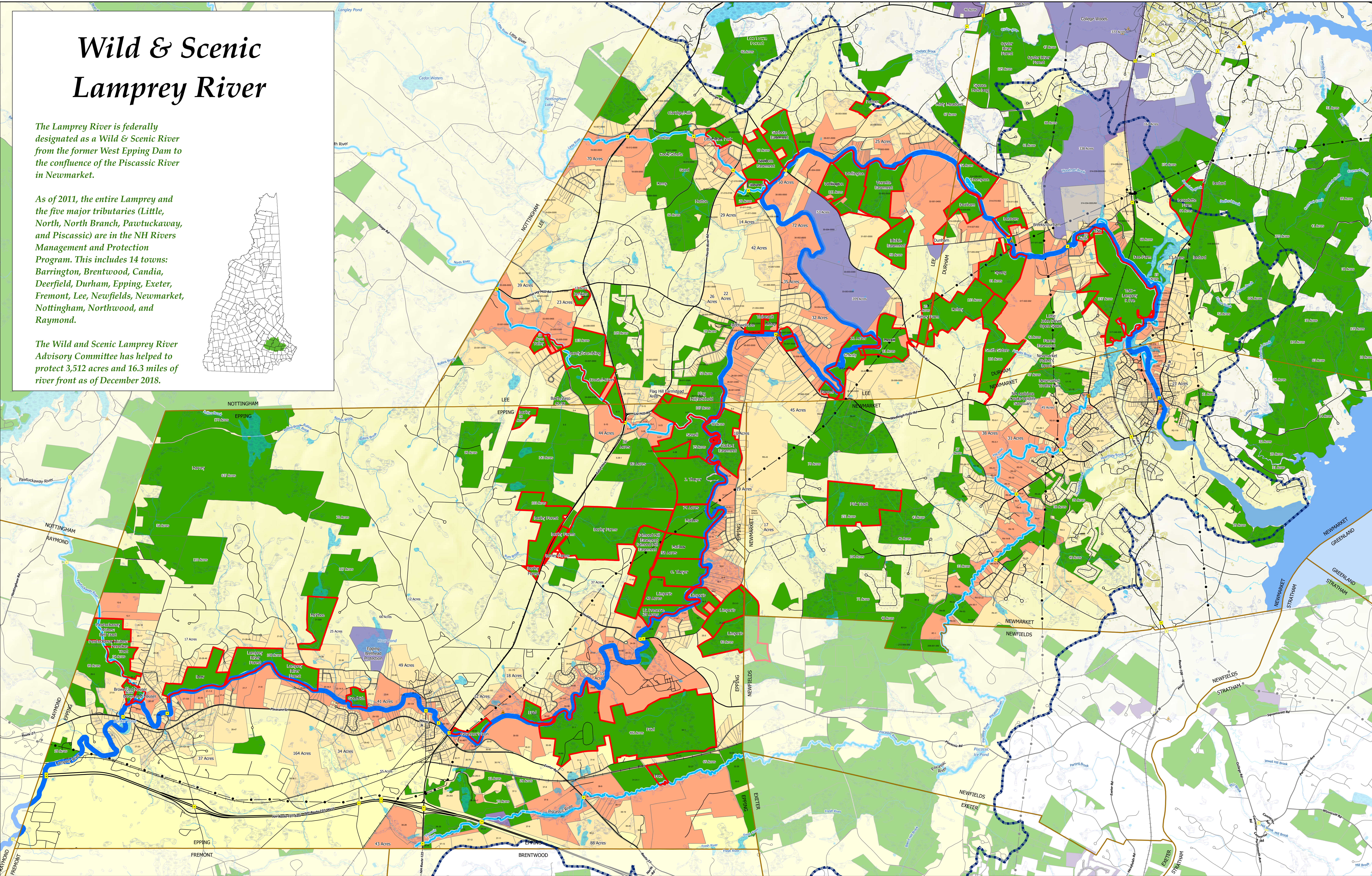
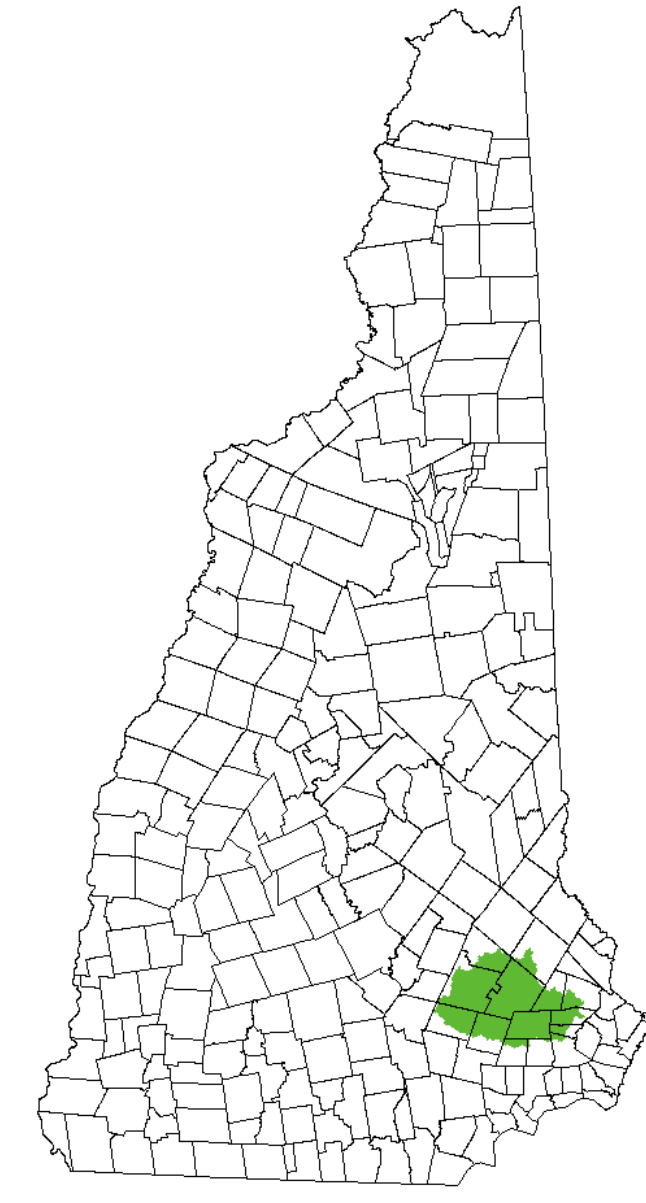


Wild & Scenic Lamprey River

The Lamprey River is federally designated as a Wild & Scenic River from the former West Epping Dam to the confluence of the Piscassic River in Newmarket.

As of 2011, the entire Lamprey and the five major tributaries (Little, North, North Branch, Pawtuckaway, and Piscassic) are in the NH Rivers Management and Protection Program. This includes 14 towns: Barrington, Brentwood, Candia, Deerfield, Durham, Epping, Exeter, Fremont, Lee, Newfields, Newmarket, Nottingham, Northwood, and Raymond.

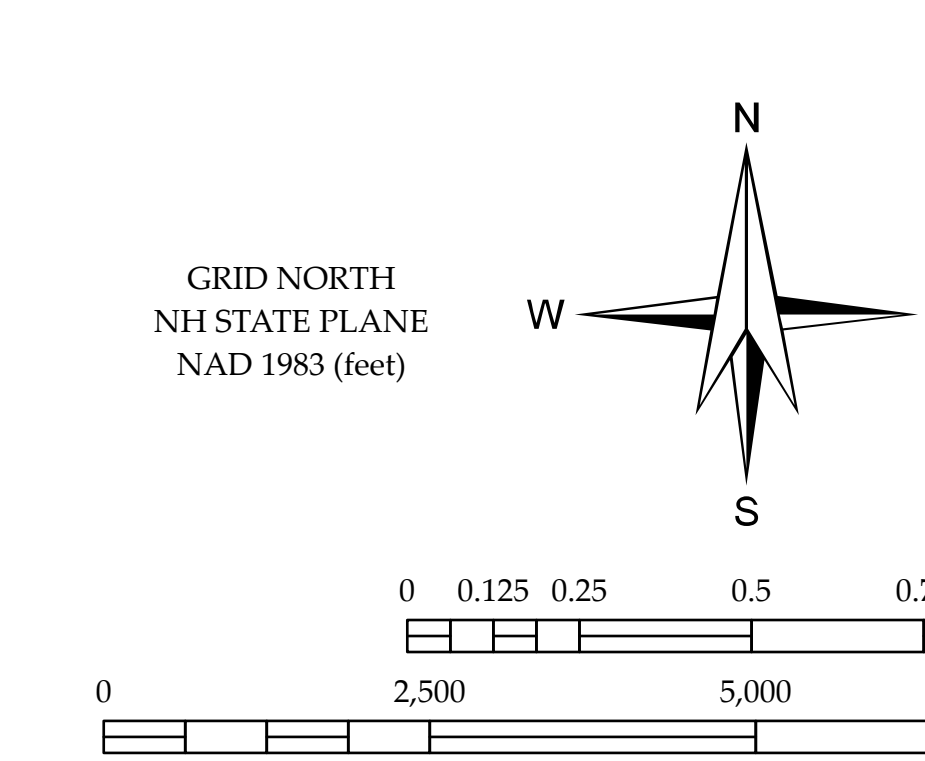
The Wild and Scenic Lamprey River Advisory Committee has helped to protect 3,512 acres and 16.3 miles of river front as of December 2018.



Prepared by **Stafford Regional Planning Commission**
 150 Wakefield Street, Suite 12, Rochester, NH 03867
 T: (603) 994-3500 F: (603) 994-3504 em: srpc@stafford.org
 Wild and Scenic Lamprey River
 Date/Author: August 2007 / DEA
 Modify Date/Author: 24 May, 2012 / DC
 Modify Date/Author: 13 Sept, 2016 / RM
 Modify Date/Author: 11 June, 2020 / JR
 Print Date: 11 June, 2020

Legend

- Lamprey River
- Designated NHRMPP Tributary to the Lamprey River
- Lamprey River Watershed Boundary
- Parcels with Frontage on Designated River
- Parcels within 1320' (1/4 mile) of a Designated River
- LRAC Projects
- Permanent Conservation Land
- Unofficial Conservation Land
- UNH
- NH Municipal Boundary
- Bridges
- Active Dams
- Lakes and Ponds
- Wetlands
- Streams and rivers
- Railroads
- Transmission Lines
- Roads
- State and Federal
- Local and Private



Data Sources:
 Base Features (Including Hydrography, Transmission Lines, Political Features) were automated from USGS Digital Line Graph data, 1:24,000, as archived in the NH GRANIT Database. Digital data in NH GRANIT represent the efforts of the contributing agencies to record information from the cited source materials. Complex Systems Research Center, under contract to the NH Office of Energy and Planning, and in consultation with cooperating agencies, maintains a continuing program to identify and correct errors in these data. OEP, CSRC, and the cooperating agencies make no claim as to the validity or reliability or to any implied uses of these data. Digital Parcel data is intended for planning purposes only. Data taken archived at SRPC.

