

United States Department of the Interior
National Park Service

National Register of Historic Places Continuation Sheet

Wiswall Falls Mill Site

Stafford County, New Hampshire

10. Geographical Data

UTM References (cont.)

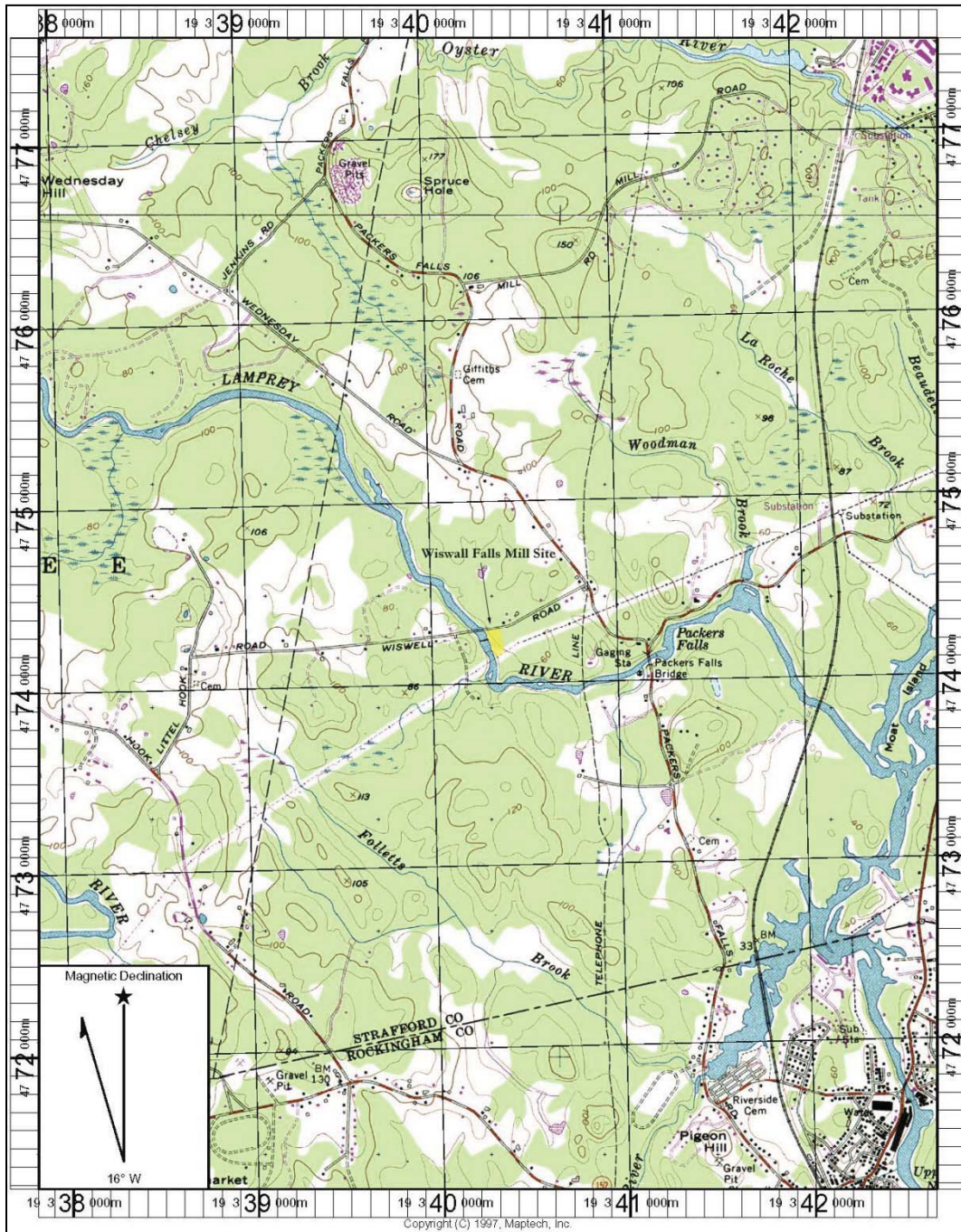
1	1172112.5567	220932.6659	3	19	1172113.1069	220917.6659
19						
Zone	Easting	Northing	Zone	Easting	Northing	
2	1172280.4941	220933.5610	4	19	1172286.0957	220918.5610
19						
Zone	Easting	Northing	Zone	Easting	Northing	

United States Department of the Interior
National Park Service

National Register of Historic Places Continuation Sheet

Wiswall Falls Mill Site

Stafford County, New Hampshire



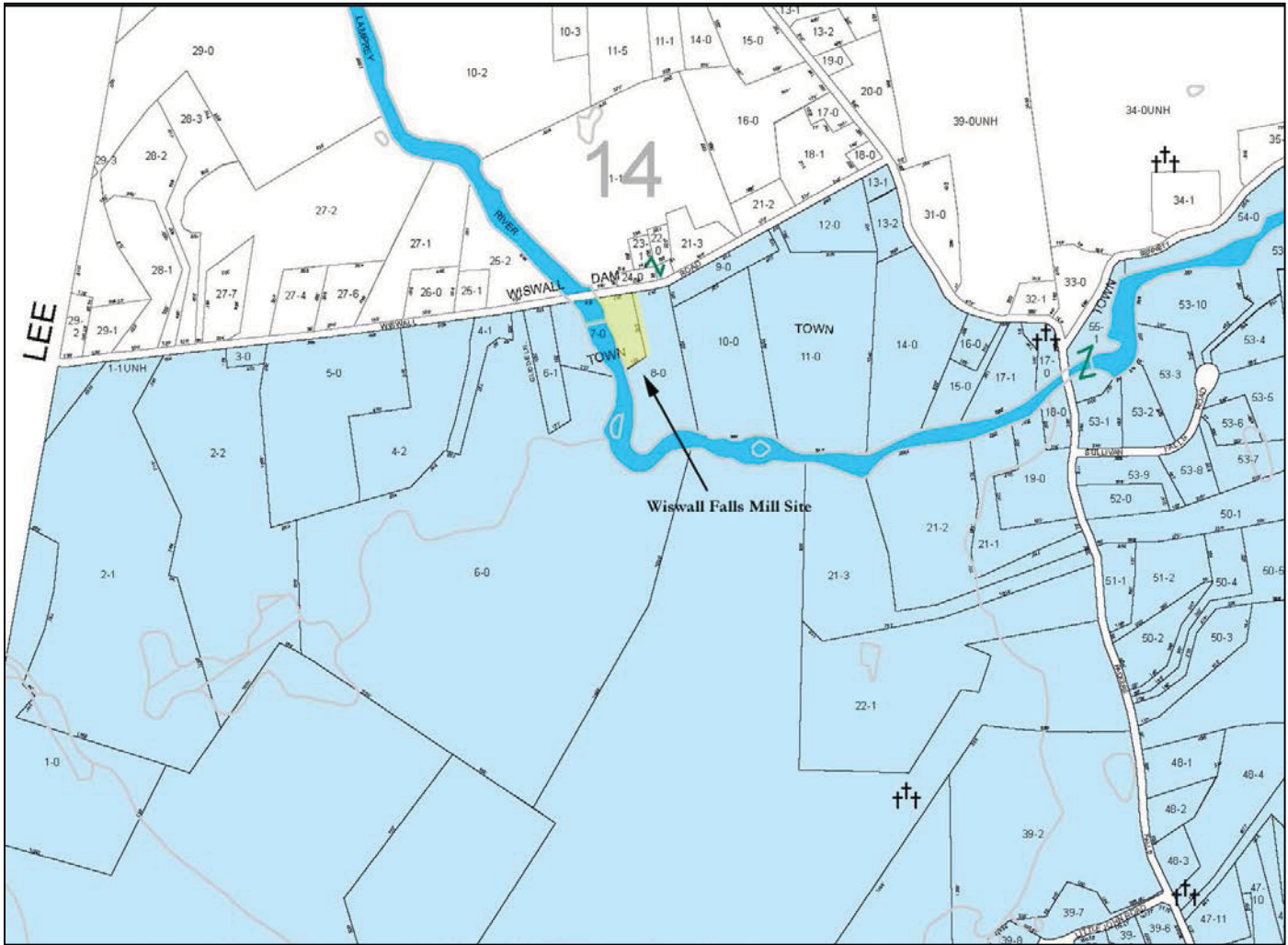
Newmarket, NH, USGS topographic quadrangle, 7.5 minute series.

United States Department of the Interior
National Park Service

National Register of Historic Places Continuation Sheet

Wiswall Falls Mill Site

Stafford County, New Hampshire



Town of Durham Assessor's Map 17.

**United States Department of the Interior
National Park Service**

National Register of Historic Places Continuation Sheet

Wiswall Falls Mill Site

Stafford County, New Hampshire



Photograph of Thomas H. Wiswall (Stackpole 1994).

United States Department of the Interior
National Park Service

National Register of Historic Places Continuation Sheet

Wiswall Falls Mill Site

Stafford County, New Hampshire

**Mills & Privilege
FOR SALE!**

The Valuable Mills and Privilege in Durham,
KNOWN AS

WIGGIN'S MILLS,

Will be sold at Auction on the premises on **Wednesday, May 13th, 1857, at 10 o'clock** in the forenoon.

They consist of a **PAPER MILL 80 by 30 ft., GRIST MILL 50 by 24 ft., SAW MILL 60 by 24 ft.** all two stories in height—**SHED** for planing and jointing **40 by 12 ft.** Also, a **SINGLE SHED 18 by 28 ft.** with an ample yard of about

FOUR ACRES OF LAND.

The Paper Mill is now leased to Messrs Wiswall & Moses, and their lease has several years to run, and will be sold subject to their lease.

These Mills are situated on Lamprey River about two and a half miles from New Market, and about one mile west of the line of the **B. & M. Railroad,** and convenient of access by a good road.

This Privilege has the advantage of an abundant supply of water throughout the year, and a constant supply of work for each Mill. In seasons of drought, people resort here from a distance of 15 and 20 miles to have their grain ground.

To an enterprising business man or men, a rare opportunity is here offered to make money—plenty of work, a ready market, and good prices—with an opportunity of enlarging and extending the business into other branches of Manufacture if desired.

Conditions of the sale made known at the sale, or previous thereto upon application to the subscriber.

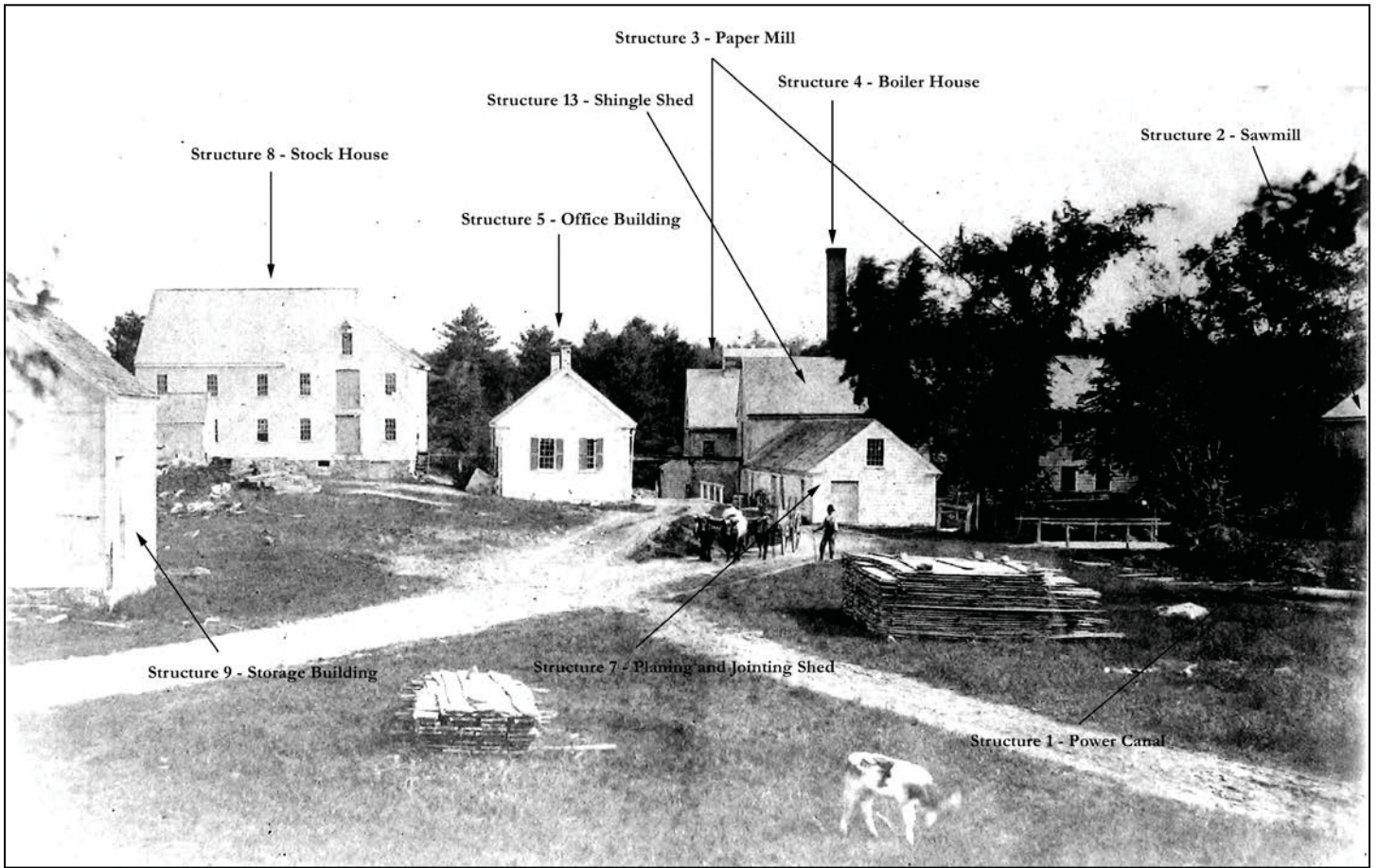
1857 auction advertisement for the Wiggin mill complex as posted in the *Dover Enquirer*.

United States Department of the Interior
National Park Service

National Register of Historic Places Continuation Sheet

Wiswall Falls Mill Site

Stafford County, New Hampshire



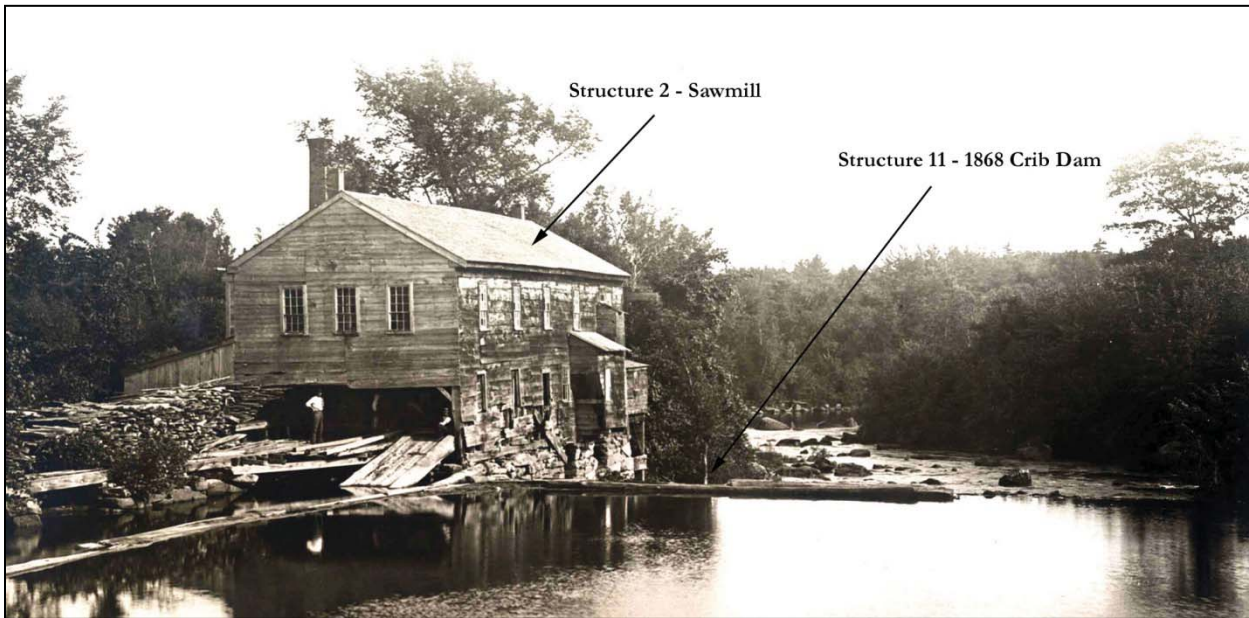
Photograph of the T.H. Wiswall & Company mill complex east of the power canal looking south, ca. 1880.

**United States Department of the Interior
National Park Service**

National Register of Historic Places Continuation Sheet

Wiswall Falls Mill Site

Stafford County, New Hampshire



Photograph of the Wiggin sawmill and 1868 crib dam looking downstream, ca. 1883–1896.

**United States Department of the Interior
National Park Service**

National Register of Historic Places Continuation Sheet

Wiswall Falls Mill Site

Stafford County, New Hampshire



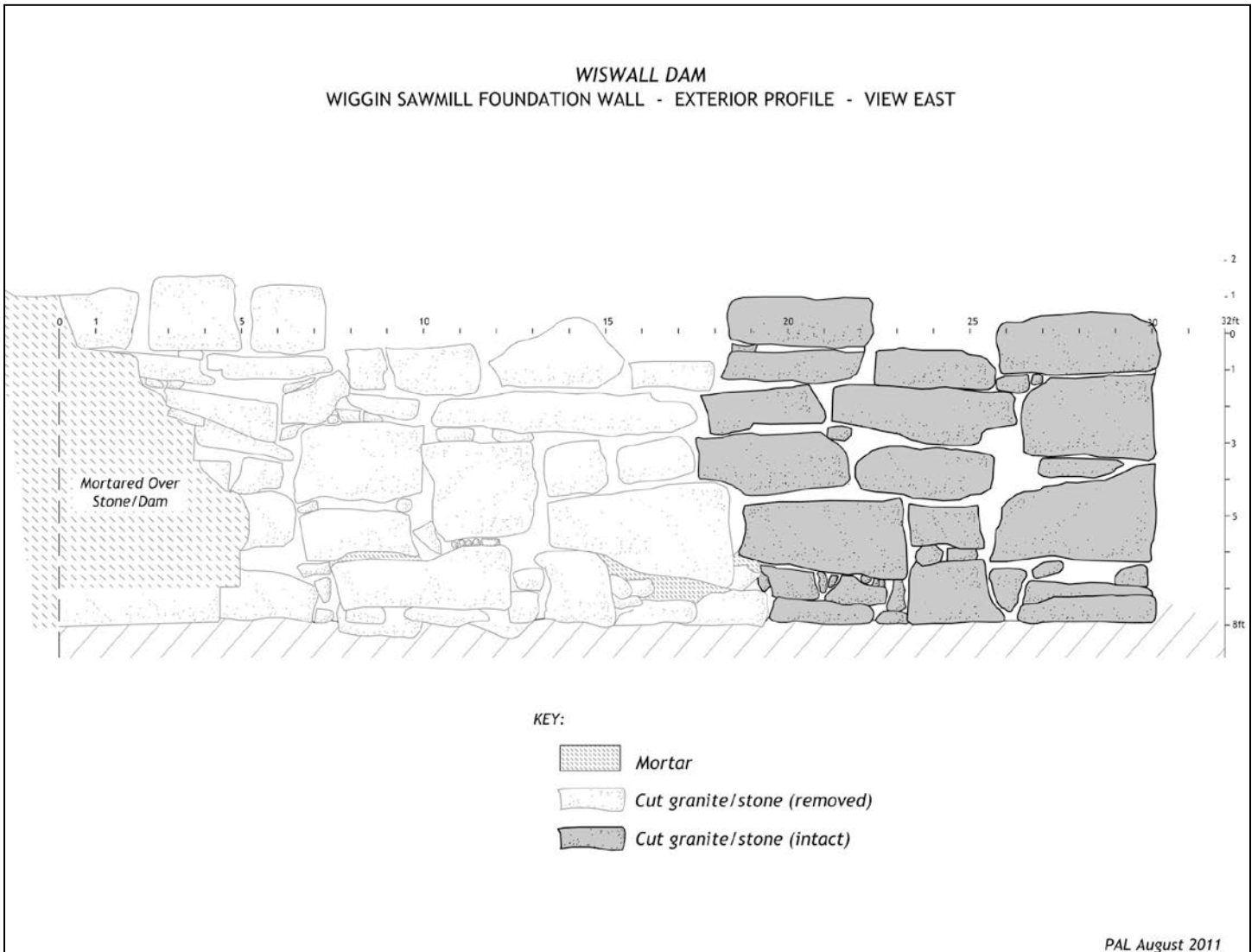
Undated photograph of the Wiggin sawmill, view southeast (Thompson 1900).

United States Department of the Interior
National Park Service

National Register of Historic Places Continuation Sheet

Wiswall Falls Mill Site

Stafford County, New Hampshire



Profile drawing of the Wiggins sawmill foundation showing those portions removed and those left intact as part of the 2011 fish passage construction project.

**United States Department of the Interior
National Park Service**

National Register of Historic Places Continuation Sheet

Wiswall Falls Mill Site

Stafford County, New Hampshire



Top view of the drive shaft recovered from the Lamprey River during the 2011 fish passage construction project.

United States Department of the Interior
National Park Service

National Register of Historic Places Continuation Sheet

Wiswall Falls Mill Site

Stafford County, New Hampshire



1805 map of Durham (Smith 1805)

United States Department of the Interior
National Park Service

National Register of Historic Places Continuation Sheet

Wiswall Falls Mill Site

Stafford County, New Hampshire



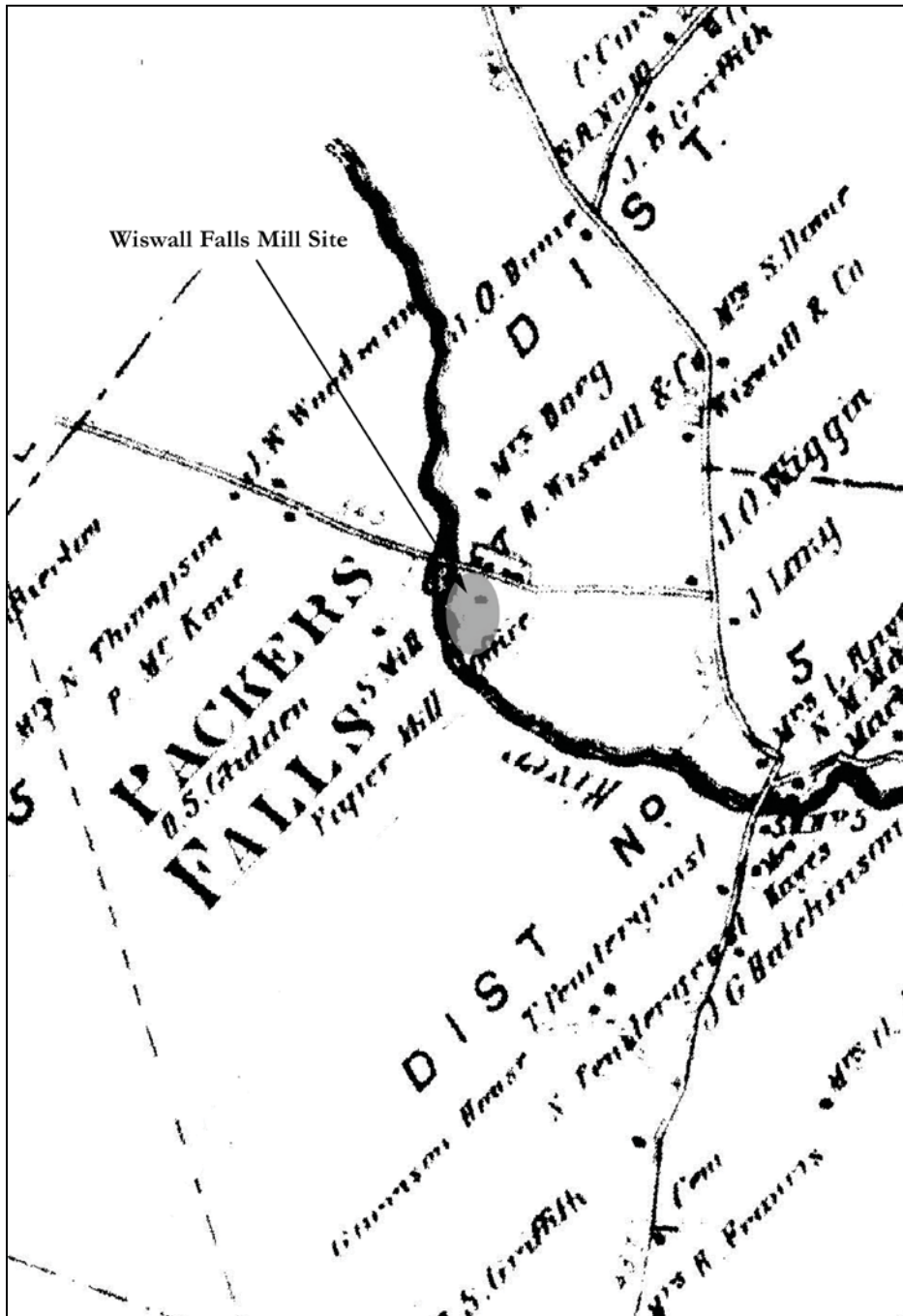
1857 map of Durham (Chace 1857).

United States Department of the Interior
National Park Service

National Register of Historic Places Continuation Sheet

Wiswall Falls Mill Site

Stafford County, New Hampshire



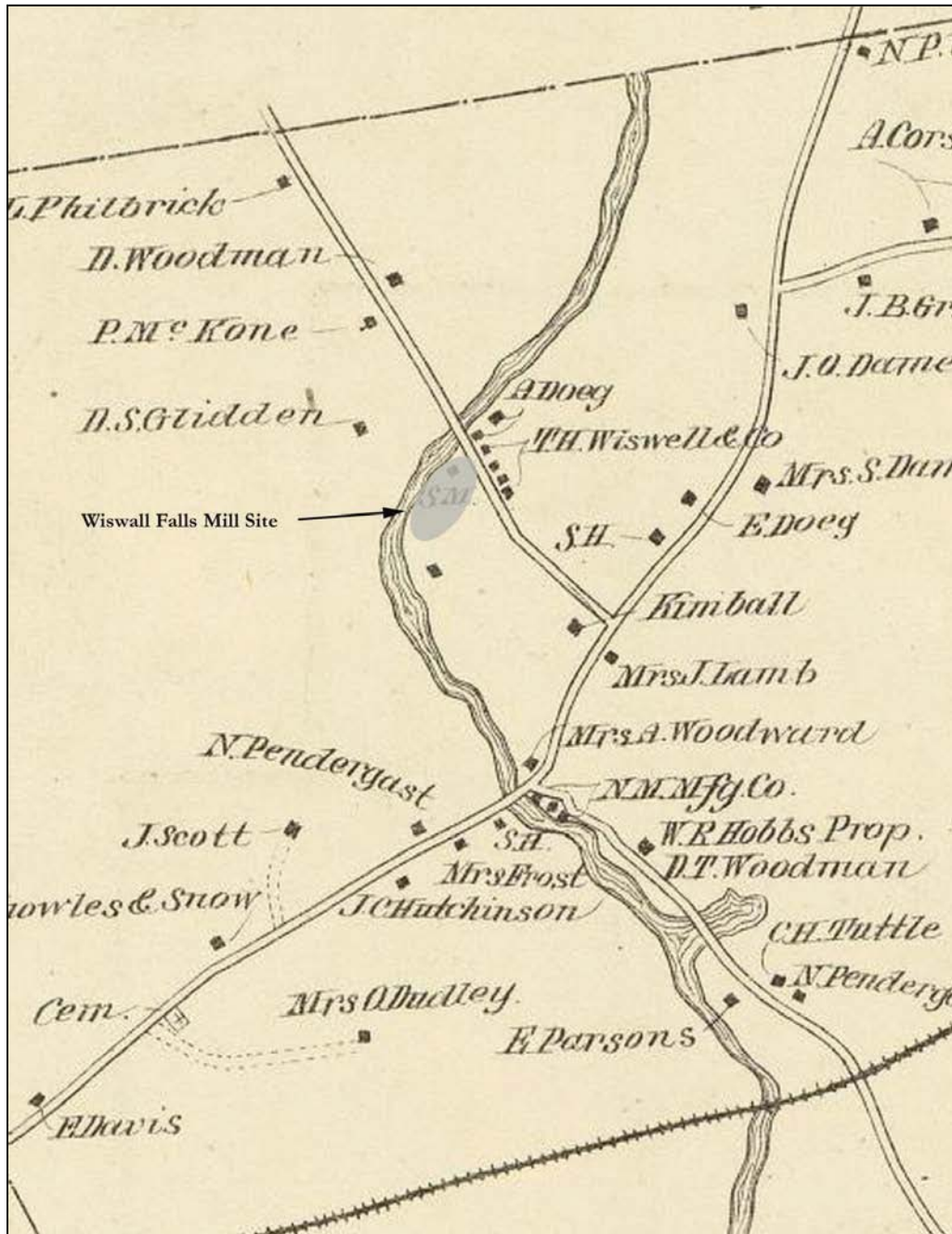
1871 map of Durham (Sanford & Everts 1871).

United States Department of the Interior
National Park Service

National Register of Historic Places Continuation Sheet

Wiswall Falls Mill Site

Stafford County, New Hampshire



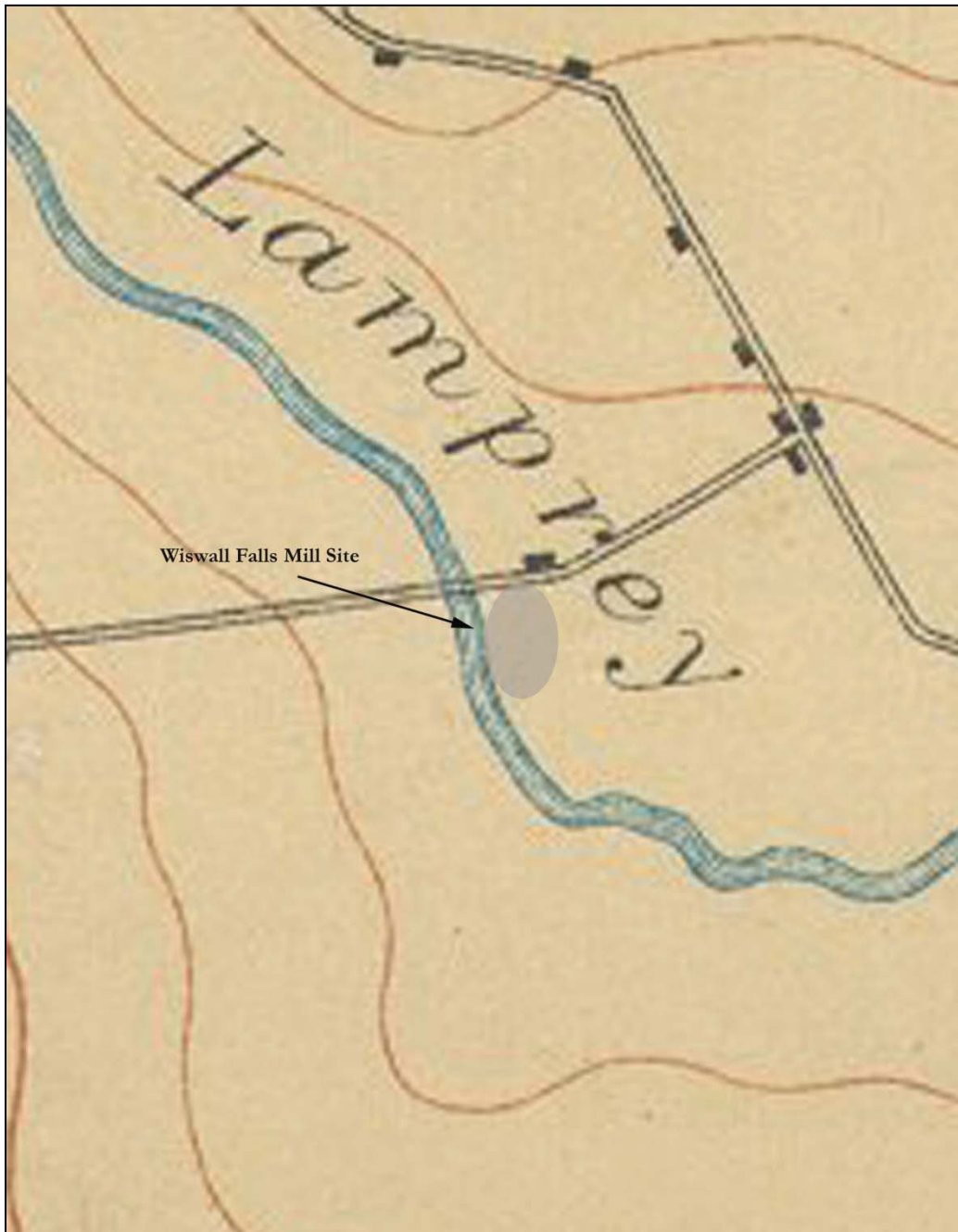
1892 map of Durham (Hurd 1892).

**United States Department of the Interior
National Park Service**

National Register of Historic Places Continuation Sheet

Wiswall Falls Mill Site

Stafford County, New Hampshire



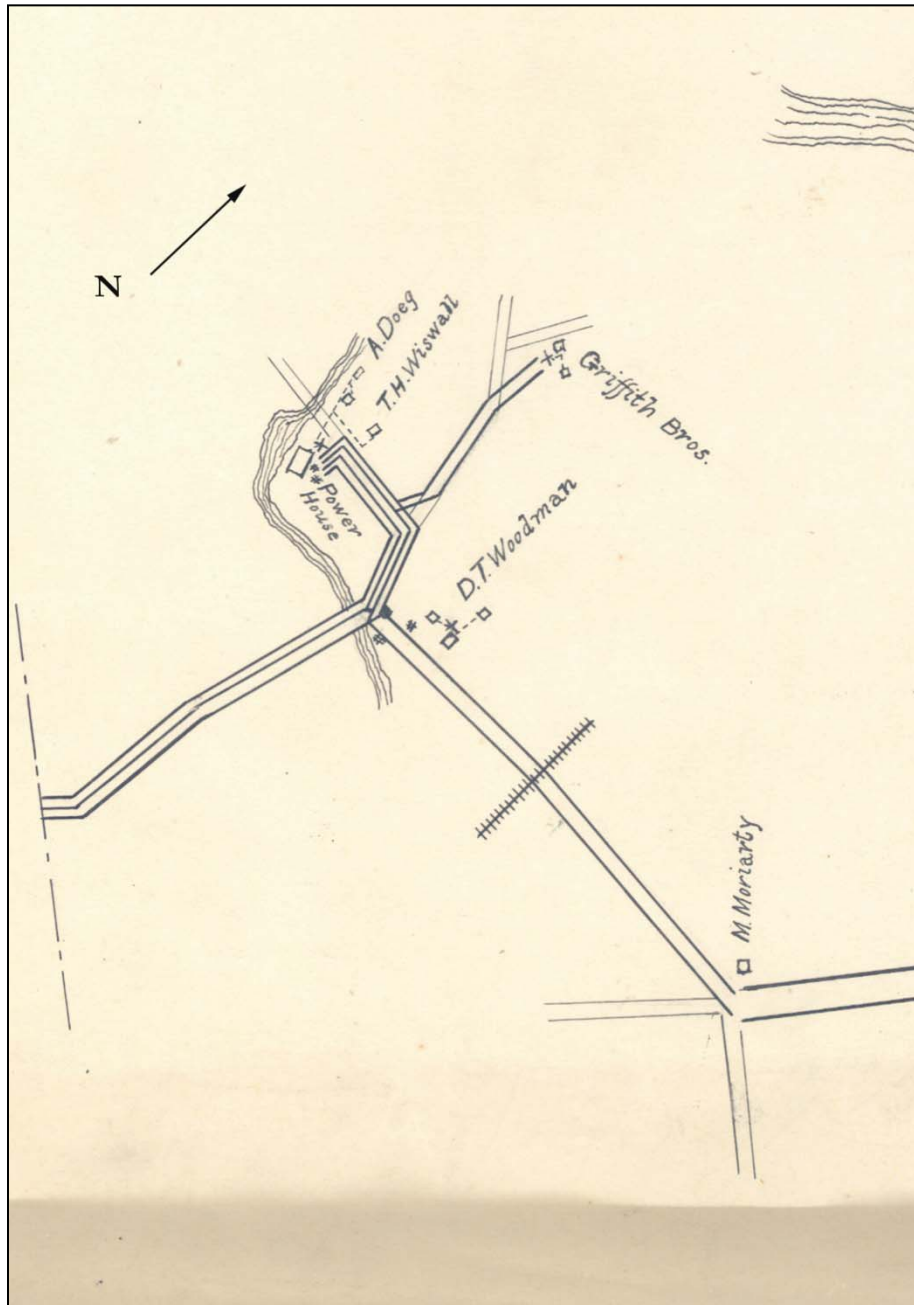
1893 Dover, NH, USGS topographic quadrangle, 15 minute series (University of New Hampshire Library Digital Collections Initiative 2012).

United States Department of the Interior
National Park Service

National Register of Historic Places Continuation Sheet

Wiswall Falls Mill Site

Stafford County, New Hampshire



1912 Newmarket Electric Company map showing the hydroelectric power plan and new concrete dam and head gate in the location of the former Wiswall Mill complex (Durham Historic Association 2011).